

TDS no.	Date	Page	Product	Issued by	Rev.
J15	2015-01-14	1/1	KBS MORTAR	M.S	

## TDS J15: **KBS MORTAR!** - Fire Resistant Mortar

### DESCRIPTION

#### General

**KBS MORTAR!** is a dry fire resistant mortar which when mixed with water produces controlled swelling effect to provide homogenous and smoke-gas-tight fire seal for cable and pipe penetrations. The fire seal have a low compressive strength, which easily allows drilling holes for additional installations. In contrary to other mortars is **KBS MORTAR!** not shrinking during the setting process. The normal shrinking effect is overcompensated by a expanding effect of about 3 % thus avoiding shrinkage or adhesion cracks.

#### Composition

**KBS MORTAR!** is a special light-weight mortar with low compressive strength by a blend of inorganic binders, fillers and lightweight aggregates, interlaced with special additives and agents.

#### Recommended uses

**KBS MORTAR!** is recommended wherever fire stops cable or pipe penetration with a fire resistance are specified. The installation are suitable for penetrations where many cables pass at random. The thickness of sealing is 10-20 cm, depending on testing requirements (see installation instructions)

### SPECIFICATION

#### Fire Resistance

According BS 476, DIN 4102, UL 1479, EN 1366-3 up to 240 min depending on standard and thickness.

**Colour:** Red

**Bulk density:** Approx. 600g/l

**pH-value at working consistency:** 12.3

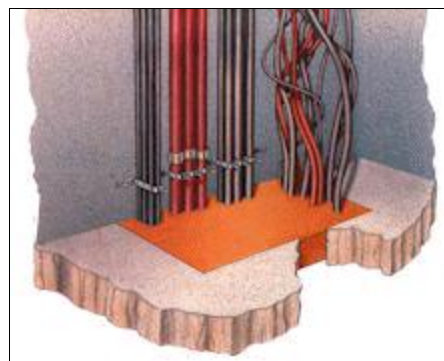
**Toxicity:** Non-toxic

**Shelf life:** In original, unopened package at least 24 months.

**Storage temperatur:** -20°C / + 40°C

**Combustibility:** Non-combustible

**Packaging:** 25 kg multi-layers bags with polyethylene lining (pallet size 21 x 25 kg - 525 kg).



**Density of cured material:** Approx 0.6 g/cm<sup>3</sup>

**Compressive strenght:** Approx 0.6-0.7 N/mm<sup>2</sup>

**Expansion:** Approx. 3 Vol. % (20°C / 24 h)

**Workability:** Max 60 minutes

**Complete hardening:** Approx. 30 days

**Min. temperature for application:** + 5°C

**Cleaning of equipment:** Water (immediatly after use)

**Ready volume:** 1 kg mortar and 0.65 L water gives approx. yield of 1.4-1.5 L. 25 kg **KBS MORTAR!** mixed with 18 liter water gives aprox. 36 liter yield. See mixing recommendation in the installation instruction (depending on application).